

# Reveal FirePRO™

PERSONAL TIC FOR FIREFIGHTING.  
AFFORDABLE, HIGH-RESOLUTION  
THERMAL IMAGING CAMERA.

## KEY CAMERA SPECS

- 320 x 240 Thermal Sensor
- 32° Field of View
- 4 to 1,022F Temperature Detection
- IP67 Rating
- Works Day or Night
- 300 Lumen LED Flashlight

Seek  
thermal

thermal.com



Reveal FirePRO is our most advanced handheld thermal imaging camera yet. Highly durable and easy to use, Reveal FirePRO combines a high-performance 320 x 240 thermal sensor with intuitive software to help you fight fires smarter and safer. And, when you need it, a powerful 300-lumen LED light is available at the touch of a button. The Reveal FirePRO delivers unprecedented high-resolution thermal imaging available at this price.

Find hot spots and victims faster when every second counts. See through smoke, visualize your plan, and execute.

Designed and Manufactured in Santa Barbara, California with Global Components.



## KEY FEATURES

- 320 x 240 High-Resolution Thermal Sensor**  
76,800 temperature pixels for maximum image clarity and sensitivity
- Waterproof Design**  
Durable and reliable design built with IP67 rating
- Wide, 32-Degree Field of View**  
Easily scan a large area to identify hazards in seconds
- Long-Lasting Rechargeable Battery**  
Up to 3.5 hours of continuous thermal imaging
- 3 Modes. Purpose-Built for First Responders**  
Enhance your vision and situational awareness with a variety of color modes

## BENEFITS

- Situational Awareness**  
Visualize hazards invisible to the human eye and navigate safely
- Affordable Personal TIC**  
Equip the entire department with the first affordable personal TIC
- See Through Smoke. Flashlight Optional.**  
300 lumen LED flashlight available at the touch of a button
- Search and Rescue**  
Find victims and self-rescue faster with a reliable personal TIC
- Execute 360 Size-ups & Overhaul Faster**  
When seconds count, a Seek personal TIC saves time and lives

## TECHNICAL SUMMARY

SPECIFICATIONS	DESCRIPTION
Thermal Sensor	320 x 240 (76,800 pixels)
Detection Distance	12 inches to 1,800 feet
Field of View	Wide, 32 Degree FOV
Temperature Range	-4 to 1,022F (-20 to 550C)
Operating Temp	-4 to 140F (-20 to 60C) No time limit
Operating Temp (10 min)	-4 to 185F (-20 to 85C) Up to 10 minutes
Operating Temp (2 min)	-4 to 225F (-20 to 107C) Up to 2 minutes
Frame Rate	>15 Hz FastFrame
IP Rating	IP67 Waterproof
Flashlight	300 Lumen LED
Display	2.4" Color with Corning® Gorilla® Glass
Thermal Sensitivity	< 70 mK
User Interface	Self-Contained Device with 3 Button Navigation
Temp. Display Scale	Fahrenheit or Celsius
Color Filters	3 Options (FIRE, SURVEY, & COLOR)
Storage Media	4GB Internal Drive (>4,000 images)
Battery	Up to 3.5 Hours Thermal Imaging

For support and user guides visit [thermal.com](http://thermal.com)

## 300 LUMEN LED LIGHT



Seek Reveal FirePRO combines powerful thermal insight and a high-performance LED flashlight in one durable device.

## USER INTERFACE



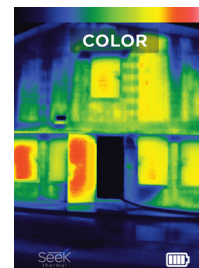
### 3 MODES

Enhance your vision and situational awareness with a variety of color filters



### PHOTOS

Capture and save thermal images directly to the internal 4GB memory



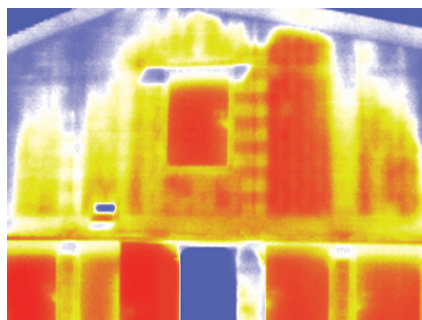
### VISUALIZE HEAT

Quickly visualize a scene with automatic temperature colorization

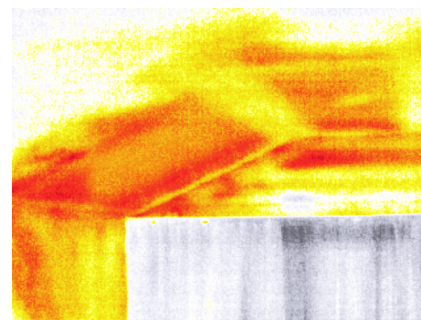
## THERMAL APPLICATIONS



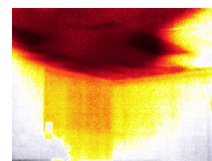
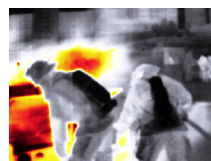
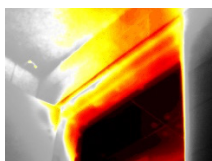
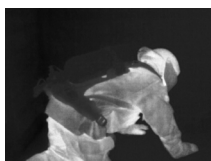
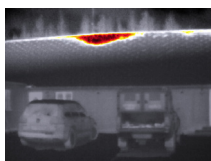
SEARCH AND RESCUE



360 SIZE UP



OVERHAUL



Seek more at [thermal.com](http://thermal.com)

111 Castilian Drive, Santa Barbara, CA 93117 USA

Seek Thermal engineers, designs and manufactures high quality thermal imaging products and core platforms for consumer, commercial, and heat sensing IoT data applications. With headquarters in Santa Barbara, California, the global hub of thermal imaging innovation, the company has developed breakthrough thermal imaging camera cores that will enable a range of affordable products for use at home, work and play. For more information visit [thermal.com](http://thermal.com) and follow #seekthermal on Instagram and @seekthermal on Twitter.